

Timpani in C/G

Sheet Music from www.mfiles.co.uk

Symphony No. 5

(in C minor, Op. 67)

Ludwig van Beethoven

Allegro con brio

2 12

p — *f*

Detailed description: This staff contains measures 1 through 12. It begins with a whole rest in measure 1. Measures 2 and 3 contain a half note G2 with a fermata. Measures 4 and 5 contain a half note G2 with a fermata. Measures 6 through 12 contain a rhythmic pattern of eighth notes: G2, A2, B2, C3, D3, E3, F3, G3, with rests in the following measures.

22 18 2 2

f *f*

Detailed description: This staff contains measures 13 through 22. Measures 13 and 14 contain a half note G2 with a fermata. Measures 15 and 16 contain a half note G2 with a fermata. Measures 17 and 18 contain a half note G2 with a fermata. Measures 19 and 20 contain a half note G2 with a fermata. Measures 21 and 22 contain a half note G2 with a fermata.

51 2 39

ff *f*

Detailed description: This staff contains measures 23 through 50. Measures 23 through 30 contain a continuous eighth-note pattern: G2, A2, B2, C3, D3, E3, F3, G3. Measures 31 and 32 contain a half note G2 with a fermata. Measures 33 through 39 contain a half note G2 with a fermata. Measure 40 contains a half note G2 with a fermata.

99 4 11 2 4

Detailed description: This staff contains measures 51 through 98. Measures 51 and 52 contain a half note G2 with a fermata. Measures 53 and 54 contain a half note G2 with a fermata. Measures 55 and 56 contain a half note G2 with a fermata. Measures 57 and 58 contain a half note G2 with a fermata. Measures 59 and 60 contain a half note G2 with a fermata. Measures 61 and 62 contain a half note G2 with a fermata. Measures 63 and 64 contain a half note G2 with a fermata. Measures 65 and 66 contain a half note G2 with a fermata. Measures 67 and 68 contain a half note G2 with a fermata. Measures 69 and 70 contain a half note G2 with a fermata. Measures 71 and 72 contain a half note G2 with a fermata. Measures 73 and 74 contain a half note G2 with a fermata. Measures 75 and 76 contain a half note G2 with a fermata. Measures 77 and 78 contain a half note G2 with a fermata. Measures 79 and 80 contain a half note G2 with a fermata. Measures 81 and 82 contain a half note G2 with a fermata. Measures 83 and 84 contain a half note G2 with a fermata. Measures 85 and 86 contain a half note G2 with a fermata. Measures 87 and 88 contain a half note G2 with a fermata. Measures 89 and 90 contain a half note G2 with a fermata. Measures 91 and 92 contain a half note G2 with a fermata. Measures 93 and 94 contain a half note G2 with a fermata. Measures 95 and 96 contain a half note G2 with a fermata. Measures 97 and 98 contain a half note G2 with a fermata.

126 2 28

pp

Detailed description: This staff contains measures 99 through 125. Measures 99 and 100 contain a half note G2 with a fermata. Measures 101 and 102 contain a half note G2 with a fermata. Measures 103 and 104 contain a half note G2 with a fermata. Measures 105 and 106 contain a half note G2 with a fermata. Measures 107 and 108 contain a half note G2 with a fermata. Measures 109 and 110 contain a half note G2 with a fermata. Measures 111 and 112 contain a half note G2 with a fermata. Measures 113 and 114 contain a half note G2 with a fermata. Measures 115 and 116 contain a half note G2 with a fermata. Measures 117 and 118 contain a half note G2 with a fermata. Measures 119 and 120 contain a half note G2 with a fermata. Measures 121 and 122 contain a half note G2 with a fermata. Measures 123 and 124 contain a half note G2 with a fermata. Measure 125 contains a half note G2 with a fermata.

164

f

Detailed description: This staff contains measures 126 through 163. Measures 126 and 127 contain a half note G2 with a fermata. Measures 128 and 129 contain a half note G2 with a fermata. Measures 130 and 131 contain a half note G2 with a fermata. Measures 132 and 133 contain a half note G2 with a fermata. Measures 134 and 135 contain a half note G2 with a fermata. Measures 136 and 137 contain a half note G2 with a fermata. Measures 138 and 139 contain a half note G2 with a fermata. Measures 140 and 141 contain a half note G2 with a fermata. Measures 142 and 143 contain a half note G2 with a fermata. Measures 144 and 145 contain a half note G2 with a fermata. Measures 146 and 147 contain a half note G2 with a fermata. Measures 148 and 149 contain a half note G2 with a fermata. Measures 150 and 151 contain a half note G2 with a fermata. Measures 152 and 153 contain a half note G2 with a fermata. Measures 154 and 155 contain a half note G2 with a fermata. Measures 156 and 157 contain a half note G2 with a fermata. Measures 158 and 159 contain a half note G2 with a fermata. Measures 160 and 161 contain a half note G2 with a fermata. Measures 162 and 163 contain a half note G2 with a fermata.

173 8 6

più f

Detailed description: This staff contains measures 164 through 172. Measures 164 and 165 contain a half note G2 with a fermata. Measures 166 and 167 contain a half note G2 with a fermata. Measures 168 and 169 contain a half note G2 with a fermata. Measures 170 and 171 contain a half note G2 with a fermata. Measure 172 contains a half note G2 with a fermata.

195 50

ff *ten.*

Detailed description: This staff contains measures 173 through 194. Measures 173 and 174 contain a half note G2 with a fermata. Measures 175 and 176 contain a half note G2 with a fermata. Measures 177 and 178 contain a half note G2 with a fermata. Measures 179 and 180 contain a half note G2 with a fermata. Measures 181 and 182 contain a half note G2 with a fermata. Measures 183 and 184 contain a half note G2 with a fermata. Measures 185 and 186 contain a half note G2 with a fermata. Measures 187 and 188 contain a half note G2 with a fermata. Measures 189 and 190 contain a half note G2 with a fermata. Measures 191 and 192 contain a half note G2 with a fermata. Measures 193 and 194 contain a half note G2 with a fermata.

251 12

ten.

Detailed description: This staff contains measures 195 through 250. Measures 195 and 196 contain a half note G2 with a fermata. Measures 197 and 198 contain a half note G2 with a fermata. Measures 199 and 200 contain a half note G2 with a fermata. Measures 201 and 202 contain a half note G2 with a fermata. Measures 203 and 204 contain a half note G2 with a fermata. Measures 205 and 206 contain a half note G2 with a fermata. Measures 207 and 208 contain a half note G2 with a fermata. Measures 209 and 210 contain a half note G2 with a fermata. Measures 211 and 212 contain a half note G2 with a fermata. Measures 213 and 214 contain a half note G2 with a fermata. Measures 215 and 216 contain a half note G2 with a fermata. Measures 217 and 218 contain a half note G2 with a fermata. Measures 219 and 220 contain a half note G2 with a fermata. Measures 221 and 222 contain a half note G2 with a fermata. Measures 223 and 224 contain a half note G2 with a fermata. Measures 225 and 226 contain a half note G2 with a fermata. Measures 227 and 228 contain a half note G2 with a fermata. Measures 229 and 230 contain a half note G2 with a fermata. Measures 231 and 232 contain a half note G2 with a fermata. Measures 233 and 234 contain a half note G2 with a fermata. Measures 235 and 236 contain a half note G2 with a fermata. Measures 237 and 238 contain a half note G2 with a fermata. Measures 239 and 240 contain a half note G2 with a fermata. Measures 241 and 242 contain a half note G2 with a fermata. Measures 243 and 244 contain a half note G2 with a fermata. Measures 245 and 246 contain a half note G2 with a fermata. Measures 247 and 248 contain a half note G2 with a fermata. Measures 249 and 250 contain a half note G2 with a fermata.

Timpani in C/G

267 **Adagio** **Tempo I**

267 *p* *f* *f* *f* *f*

290 *ff*

301 *p*

347 *tr* *tr* *ff*

359

370

379 *ff*

395

417

428

Timpani in C/G

438



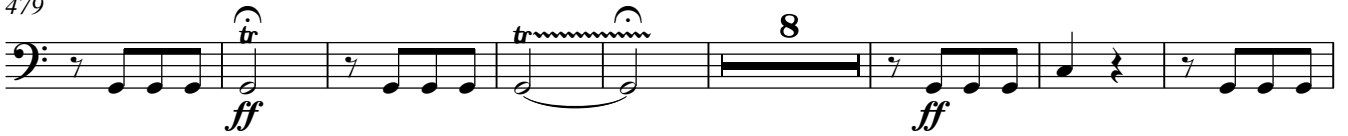
449



464



479



495

